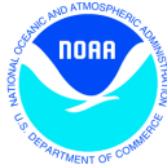


GIS Training for Coastal Resource Professionals



NOAA Coastal Inundation Mapping

On-site Regional GIS Training

To help address the need for building technical capacity within research reserves, regulatory programs, emergency preparedness offices, Sea Grant programs, and other organizations who manage coastal resources the National Oceanic and Atmospheric Administration (NOAA) Office for Coastal Management has partnered with Rookery Bay Research Reserve to offer two days of geospatial training.

Course Content

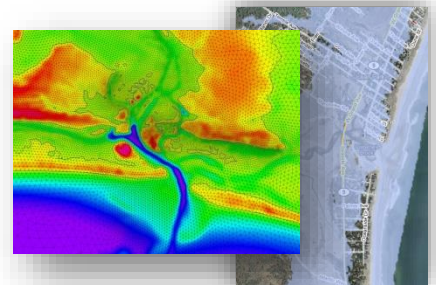
The two-day intermediate level course offers a combination of lectures and hands-on exercises designed to give students a better understanding of coastal inundation issues and inundation mapping methods using GIS. Topics include the different types of coastal inundation, elevation datasets and datums, spatial methodologies used to map flood areas in a coastal environment, the applications and limitations of various types of inundation products, and mapping sea level rise including uncertainty.

For questions about course content please contact Matt Pendleton at Matt.Pendleton@noaa.gov.

Training Logistics

Location: **Florida Gulf Coast University**
10501 FGCU Blvd S,
Fort Myers, FL 33965
Seidler Hall, Room 445

Dates: **July 23-24, 2019 (9:00 am - 4:30 pm)** Computers and Lunch will be provided



Requirements: The intended audience for this two-day course is certified floodplain managers, National Weather Service personnel, and county, state, and municipal officials (including planners, emergency managers, and coastal resource managers). Class participants should have basic GIS skills (6 months to 1 year).

To Register: [CLICK HERE](#) or find it on www.rookerybay.org/learn/programs-and-events under Professional Training

For questions or trouble registering for this course, please contact Jessica McIntosh at Jessica.McIntosh@dep.state.fl.us or call 239-230-5956

